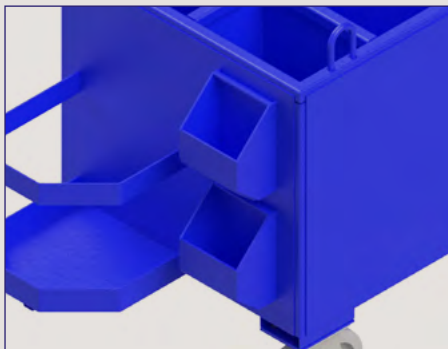
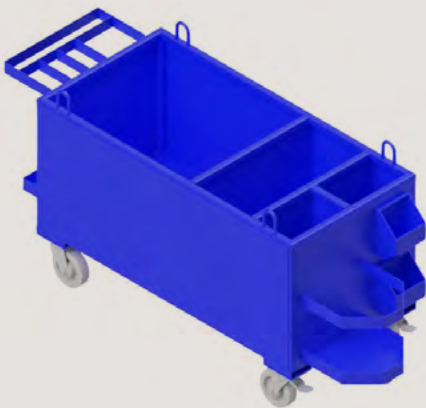


FORMWORK TROLLEY

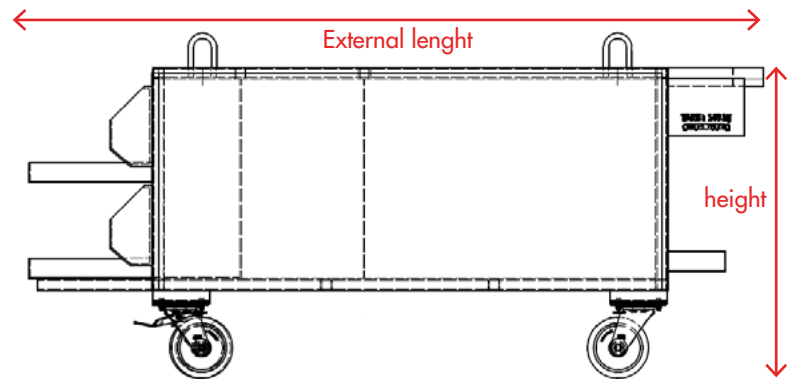
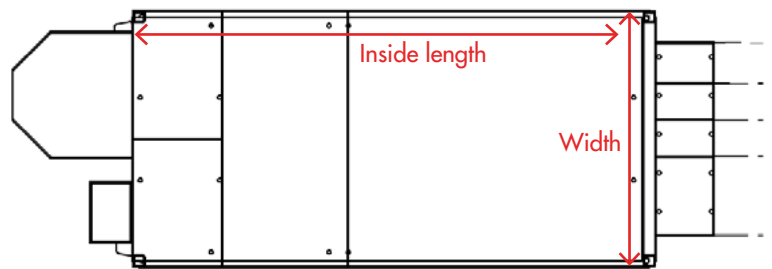
MATERIALS FOR CONSTRUCTION

PRODUCT DESCRIPTION

- Mechanically welded assembly in 3mm thick sheet metal.
- Reinforced and continuous external welding at the inner corners
- 2 wheels on Ø160 swivel and 2 fixed wheels with Ø160 brake system
- 300kg load capacity per wheel
- Lifting rings
- Painting finish: 10 colours available



DRAWINGS AND VISUALS



TECHNICAL DATA

Weight	Maximum load capacity	height	External length	Interior length	Width
165 kg	750 kg	90 cm	1 m 90	1 m	65 cm

KEY POINTS

- Ideal for storing formwork accessories (screws, cones, keys, formwork rods, etc.)
- Four compartments in the upper part
- A rack on one side and a storage for sprayer on the other

COPAC

GROUPE

Safety Materials Designer and Manufacturer

copac@copac.fr

copac.fr